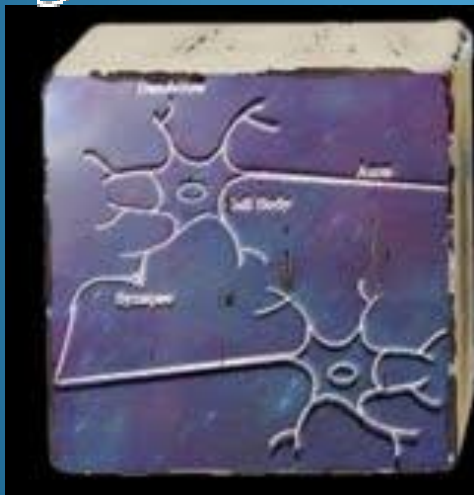


# System Performance Framework Update

District Unified Improvement Plan

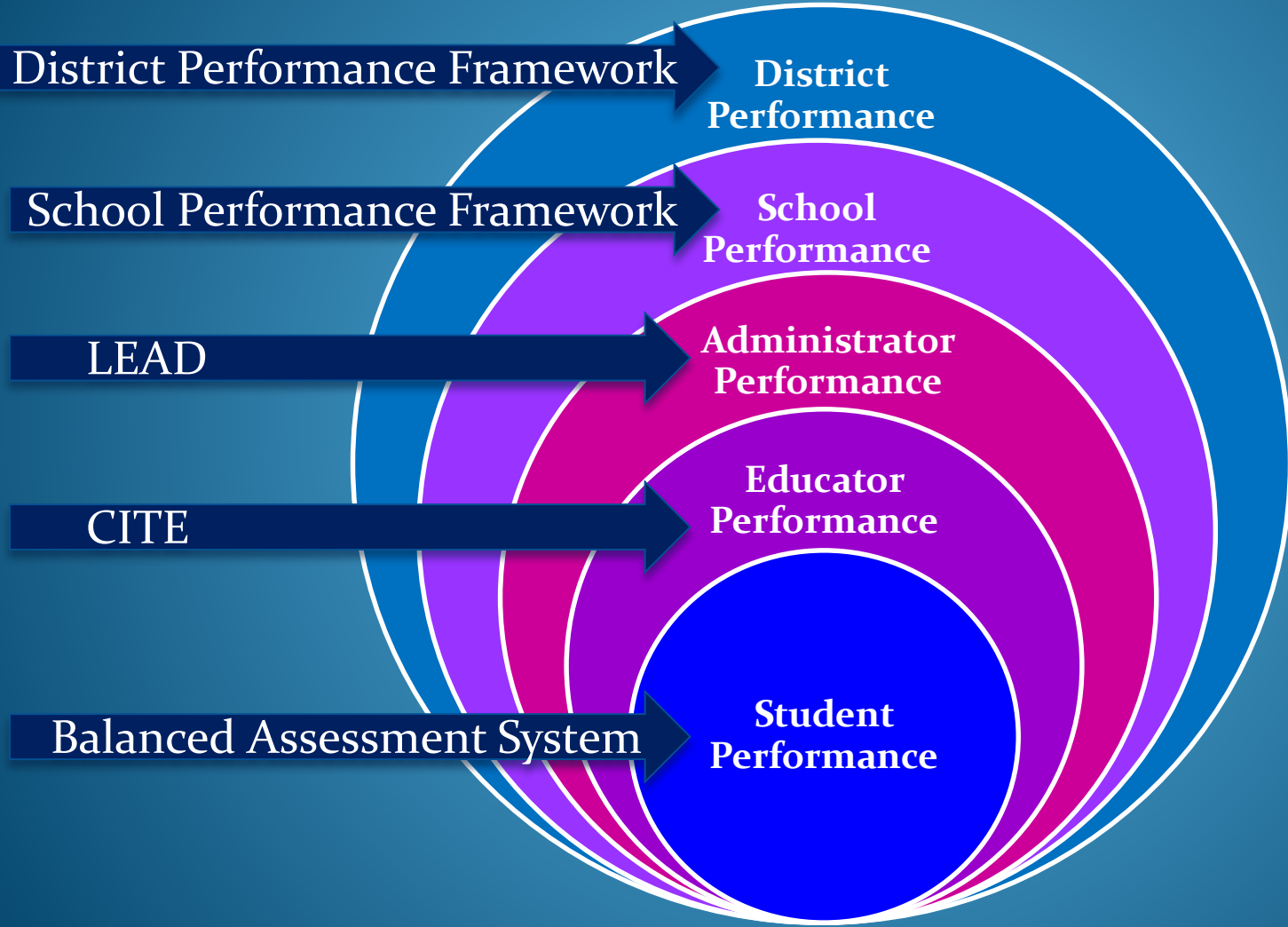


# system *performance*



**System Performance**  
empowers us to define and  
measure what matters most.

# Performance at all Levels



# District Performance Framework

District Performance Framework, 2013 - PRELIMINARY DRAFT FOR DISTRICT REVIEW  
District: DOUGLAS COUNTY RE 1 - 0900

Level: EMIS  
(All-3 Year)

Accredited

Performance Indicators

| Indicator                                     | Rating     | % of Points Earned out of Points Eligible* |
|---|------------|--|
| Academic Achievement                          | Meets      | 85.3% (12.2 out of 15 points)              |
| Academic Growth                               | Meets      | 70.2% (24.6 out of 35 points)              |
| Academic Growth (Postsecondary and Workforce) | Approaches | 58.9% (8.8 out of 15 points)               |
| Academic Growth (Meets)                       | Meets      | 76.6% (26.8 out of 35 points)              |
| Academic Growth (Approaches)                  | Approaches | 72.4% (72.4 out of 100 points)             |

Test Participation

| Grade      | Meets | Approaches | Does Not Meet |
|------------|-------|------------|---------------|
| Overall    | 97.8% | 1.8%       | 0.4%          |
| Elementary | 98.7% | 0.8%       | 0.5%          |
| Secondary  | 96.9% | 2.8%       | 0.3%          |

Meets Requirements

| Grade      | Meets | Approaches | Does Not Meet |
|------------|-------|------------|---------------|
| Overall    | 97.8% | 1.8%       | 0.4%          |
| Elementary | 98.7% | 0.8%       | 0.5%          |
| Secondary  | 96.9% | 2.8%       | 0.3%          |

Test Participation Rates

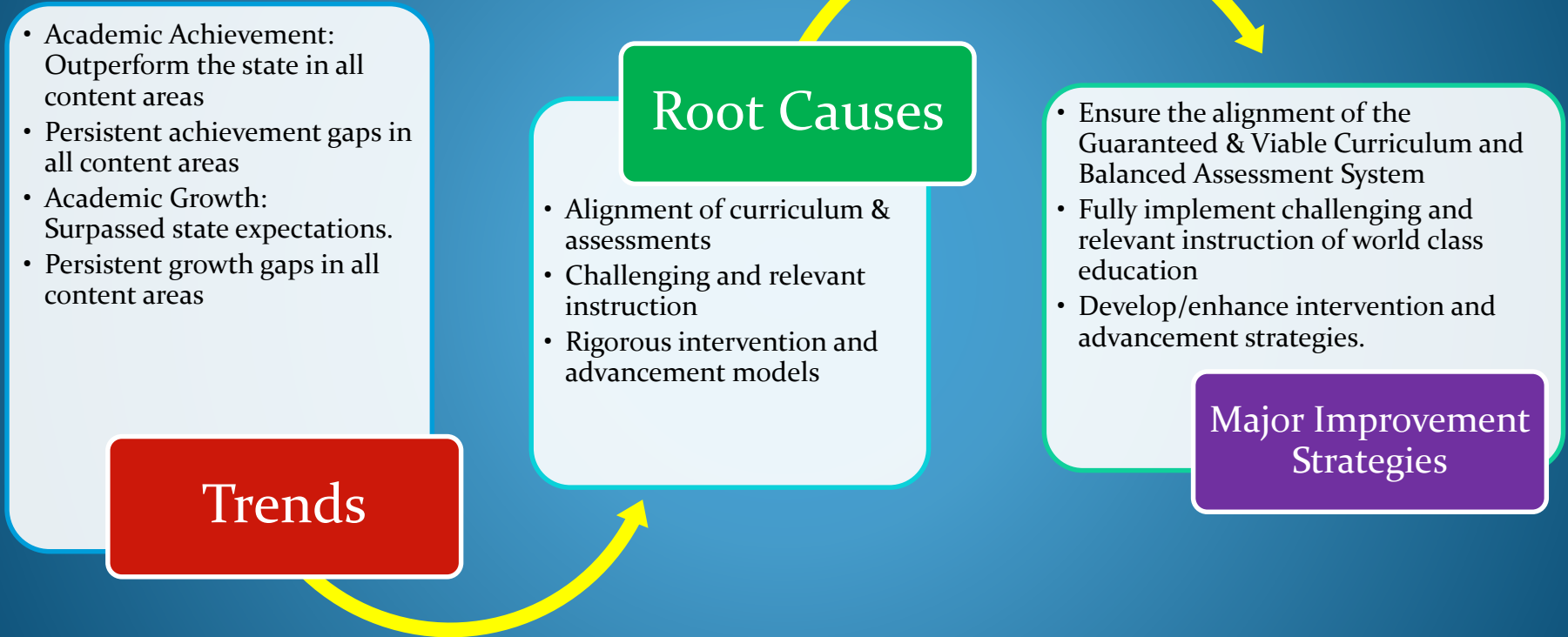
| Grade      | Meets | Approaches | Does Not Meet |
|------------|-------|------------|---------------|
| Overall    | 97.8% | 1.8%       | 0.4%          |
| Elementary | 98.7% | 0.8%       | 0.5%          |
| Secondary  | 96.9% | 2.8%       | 0.3%          |

State  
Accountability  
System

Balanced  
Assessment  
System

Evaluation  
Systems

# District Performance: UIP





# District UIP 2011-2014

## Next Steps

- Evaluation of progress to date.
- Development of  
District UIP - Baseline year

